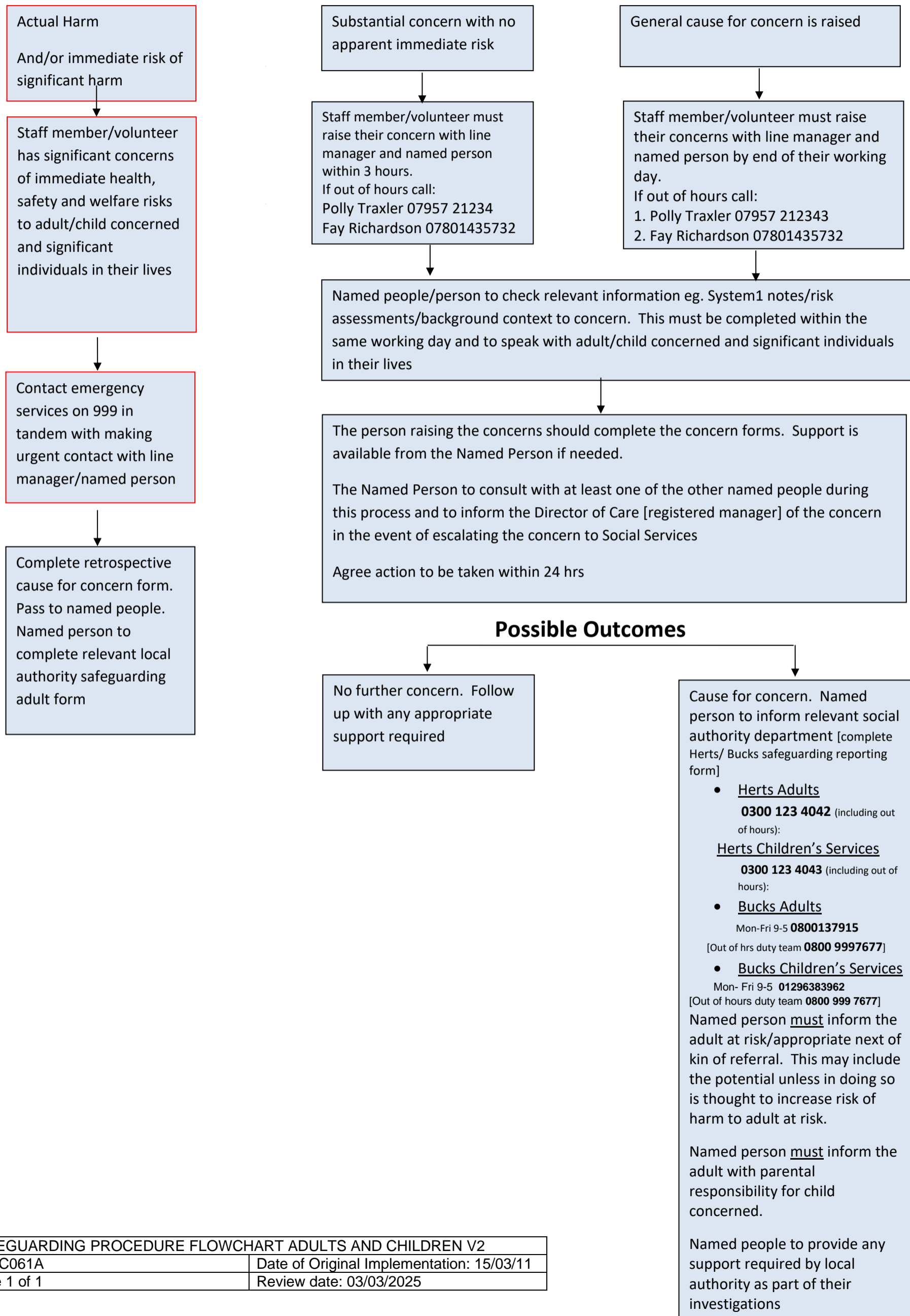


## Safeguarding Procedure Flowchart – Adults & Children

Named People: Polly Traxler – Principle Social Worker & Director of Integrated Governance, Wellbeing & Family Support, Suzy Oswick and Jessica Hobson (Social Workers) Fay Richardson [Director of Care & Commissioning]

All staff and volunteers to follow this process in the event of concerns



SAFEGUARDING PROCEDURE FLOWCHART ADULTS AND CHILDREN V2	
Ref: C061A	Date of Original Implementation: 15/03/11
Page 1 of 1	Review date: 03/03/2025